

## COVID-19 MORNING BRIEF OCTOBER 16, 2020

---

### **CANADA UPDATE**

#### **I. Public Health and Epidemiology**

*National Case Counts: (as of October 15, 19:00 EDT)*

- **Total and New Cases:**
  - Total of **191,732 new reported cases (+2,345)** yesterday.
  - This represents a rate of **6.2 new cases per 100,000** yesterday.
- **Recovered and Active Cases:**
  - **161,490 (84.2%)** cases have recovered, for a total of **20,543 (+171) active cases**. *\*\* Additional information on active cases at Annex A*
- **Deaths:**
  - **9,699 (+35)** deaths (AB-1, MB-1, ON-5, QC-28).
- **Reproduction Rate:**
  - The estimated reproduction rate (Rt) in Canada is **1.14** as of October 15.

*Provincial and Territorial (P/T) Case Counts:*

- Cases are distributed across 10 provinces and 2 territories (BC, AB, SK, MB, ON, QC, NL, NB, NS, PE, YK, and NT).
- Rate of new cases per 100,000:
  - BC – 2.8; AB – 5.6; SK – 2.8; MB – 12.6; ON – 5.4; QC – 11.4; NL – 0.2
- BC reported **142** new cases yesterday; **9,257** cases have recovered, for a total of **1,527 (-3) active cases**.
- AB reported **244** new cases yesterday; **18,417** cases have recovered, for a total of **2,738 (+49) active cases**.
- Ontario reported **783** new cases yesterday; **53,291** cases have recovered, for a total of **5,883 (-1) active cases**.
  - According to the province's epidemiological summary, the **Greater Toronto Area** reported **542** new cases for October 14, for a total of approximately **40,625** cases, **21%** of the national case count.
- Quebec reported **969** new cases yesterday; **75,467** cases have recovered, for a total of **8,491 (-43) active cases**.
  - According to Santé Montréal, the **Greater Montreal Area** reported **504** new cases on October 14, for a total of approximately **59,944** cases, **31%** of the national case count.

*National and P/T Testing Overview:*

- **8,403,144 (+50,075)** people have been tested for COVID-19 across Canada to date (average of **\*64,815** per day over the last 7 days).
  - **2.1%** have tested positive to date.

- The percentage of positive tests for the week of October 4 to October 10 is **\*2.8%**.

*\*This figure does not capture laboratory testing numbers for Alberta, as Alberta has been reporting incorrect testing numbers to NML starting October 9th. The next update will be on Monday, October 19th.*

- Yesterday, BC tested **4,800** people; Ontario tested **38,654** people; testing figures for Alberta and Quebec were not available.

#### **Long-Term Care Facilities:**

- Based on P/T websites and press briefings, and not validated by P/Ts, **\*7,478** of 9,699 (77%) deaths in Canada were linked to LTC facilities as of October 15.
- On October 15, P/Ts reported **2** deaths in LTC facilities (public or privately run). These deaths had the following breakdown:
  - BC – 174 (+0); AB – 176 (+1); SK – 3 (-6); MB – 16 (+0); ON – 2,076 (+1); QC – 4,973 (-1); NB – 2 (+0); NS – 57 (+0).

*\*The reduction in LTC deaths is due to an error in yesterday's provided number for SK. The correct number for the previous report is 7,477 deaths. There were two new LTC deaths reported for the current report and one removal of a COVID-related LTC death from QC due to the death being deemed not COVID-related.*

***Note:** These numbers are subject to fluctuation and reporting lags as P/Ts complete investigations to verify deaths linked to LTC facilities. As such, these numbers cannot be directly compared against the daily numbers of new deaths reported above. Facilities may be privately run or under provincial authority.*

#### **Indigenous Communities:**

- As of October 15:
  - **First Nations Communities** – There are **924 (+18)** confirmed cases and **13 (+0)** deaths associated with First Nations communities.
    - **706 (+22)** cases have recovered, for a total of **205 (-4)** active cases.
    - The new cases are in BC (+4) AB (+3), SK (+3), MB (+4) and ON (+4).
    - **BC:** There are 6 active on-reserve cases in BC First Nations
    - **AB:** There are 48 active on-reserve cases in 26 Alberta First Nations. Samson Cree Nation (24 active) and Saddle Lake First Nation (7 active) have the highest number of active cases.
    - **SK:** There are 49 active on-reserve cases in 13 Saskatchewan First Nations. The Northern Inter-Tribal Health Authority is tracking a number of community outbreaks, most recently in Red Earth Cree Nation.
    - **MB:** There are 64 active on-reserve cases in Manitoba First Nations. No new cases have been identified for two days in Little Grand Rapids First Nation.
    - **ON:** There are 26 active on-reserve cases in Ontario First Nations, all of which are in Six Nations of the Grand River. All other cases in Ontario First Nation communities are resolved at this time.

- **Northern and Inuit Communities\***
    - There are **28 (+0)** cases associated with residents of Inuit communities in Nunavik (northern QC), with **23 (+0)** recovered and **5(+4)** active.
    - All cases in Yukon (15) and NWT (5) have recovered.
- \*Breakdowns based on Indigenous identity are not available in the territories.*

**Temporary Foreign Workers and Farm Outbreaks:**

- As of October 14:
  - There are **2,419 (+18)** (increase since October 7) reported cases among workers on farms in Canada.
  - **2,272 (+0)** cases reported to have recovered, for a total of **144 (+18) active cases**.
  - There are at least **93 operations** affected, **42 (+0)** of which are reported to no longer have active cases.

**Federal Inmates and Employees:**

As of October 15 (Inmates) and October 14 (Employees):

	Inmate Positive Tests	Inmate Resolved Cases	Active Inmate Cases	Employee Positive Tests	Employee Resolved Cases	Active Employee Cases
<b>CSC Total</b>	<b>360</b>	<b>358</b>	<b>0</b>	<b>178 (+1)</b>	<b>162 (+1)</b>	<b>16 (+0)</b>

- On October 14, there was one new employee case at the Donnacona Institute in Quebec.

## **II. Communications and Media Coverage**

- Domestic coverage of the COVID-19 pandemic is moderate Friday morning as the country continues to be in the midst of a second wave of infections. As Quebec, Ontario, and Manitoba continue to report high numbers of daily infections, significant media focus has been placed on the state of Canada's long-term care homes. In this regard, reports note warnings from experts, who fear the vulnerable population could see similar levels of devastation as was apparent during the first wave.
- International sources once again focused on the rising number of cases across Europe as many countries are implementing new restrictions to try to stop the spread. Reports noted some national governments are facing backlash from their local counterparts over restrictions, including in the UK and Italy. Globally, cases have reached past 38.9 million, while almost 2 million have died.

**Government of Canada Public Communications – October 16, 2020**

- **PM Trudeau (PCO)** holds a media availability. Ottawa, Ontario (11:30). President of the Queen’s Privy Council for Canada and Minister of Intergovernmental Affairs Dominic LeBlanc, Minister Rodriguez, Chief Public Health Officer of Canada Dr. Theresa Tam, and Deputy Chief Public Health Officer of Canada Dr. Howard Njoo will be in attendance. Open coverage for accredited media.

- **(HC)** Interim Order on drug shortages (**COVID**) Ottawa, Ontario, The Minister of Health will sign an Interim Order granting authority for additional tools necessary to prevent or alleviate drug shortages or the risk of drug shortages that may be caused or exacerbated, directly or indirectly, by the COVID-19 pandemic.

### **III. U.S. UPDATE**

#### *Case Counts:*

- As of 6:00am on October 16, Johns Hopkins is reporting **7,980,572 (+63,954)** cases of COVID-19, including **217,702 (+799)** deaths.
  - As of October 15, the CDC is reporting that the number of tests performed by commercial, hospital, public health, and CDC laboratories is **129,901,989** (average of **1,017,871** per day over the last 7 days).
  - **7%** have tested positive to date.

### **IV. GLOBAL UPDATE**

#### *Case Counts:*

- As of 6:00am on October 15, Johns Hopkins is reporting **38,966,868 (+412,316)** confirmed cases of COVID-19, including **1,098,937 (+6,073)** deaths. The U.S. is reporting the highest numbers of cases, followed by India, Brazil, Russia, Argentina, Colombia, Spain and Peru.

\*\* For internal use only – not for further distribution \*\*

## ANNEX A: Overview of COVID-19 Cases in Canada

**Table 1.** Updated COVID-19 Cases (as of October 15, 2020 at 19:00 ET)

Location	Total cases	New cases since yesterday	Active Cases	Total deaths	People tested	% of people who tested positive	Testing rate per thousand	Tests per confirmed case	Average daily tests for last 7 days	Average daily tests for last 7 days per thousand	Weekly percent positivity (Oct 4 – Oct 10)	Daily Testing Capacity	Daily testing capacity per thousand	Average daily testing as a % of capacity
BC	11,034	142	1,527	250	531,218	2.0%	105	48	6,513	1.3	1.9%	10,506	2.1	62%
AB	21,443	244	2,738	288	1,085,790	1.7%	248	51	9,135^	2.1	1.6%	22,000	5.0	42%
SK	2,232	33	271	25	182,263	1.2%	155	82	1,608	1.4	1.2%	1,800	1.5	89%
MB	3,098	173	1,527	38	211,508	1.5%	154	68	2,489	1.8	2.7%	3,000	2.2	83%
ON	62,196	783	5,883	3,022	4,386,061*	1.4%	301	71	38,934	2.7	1.7%	50,692	3.5	77%
QC	89,963	969	8,491	6,005	1,724,288	4.8%	203	19	13,492	1.6	6.7%	20,000	2.4	67%
NL	284	1	9	4	47,753	0.6%	92	168	314	0.6	0.1%	1,450	2.8	22%
NB	292	0	89	2	76,271	0.4%	98	261	675	0.9	1.5%	1,500	1.9	45%
NS	1,092	0	3	65	104,084	1.1%	107	95	510	0.5	0.1%	1,500	1.5	34%
PE	65	0	5	0	42,431	0.1%	270	653	288	1.8	0.04%	400	2.6	72%
YT	15	0	0	0	3,703	0.4%	91	247	19	0.5	0.0%	150	3.7	13%
NT	5	0	0	0	4,950	0.1%	110	990	30	0.7	0.0%	48	1.1	63%
NU	0	0	0	0	2,748	0.0%	71		24	0.6	0.0%			
Repatriated travellers	13	0	0	0	76	-	-	6	-	-	-			
<b>Total</b>	<b>191,732</b>	<b>2,345</b>	<b>20,543</b>	<b>9,699</b>	<b>8,403,144</b>	<b>2.1%</b>	<b>224</b>	<b>44</b>	<b>64,815 (-323)*</b>	<b>2.0</b>	<b>2.8%</b>			

- Note:** There are discrepancies between the number of people tested captured in this chart and that on P/T websites given reporting lags, differing reporting cut-offs, or changes in lab testing criteria. For P/Ts that report the number of tests completed or number of samples tested, as opposed to the number of people tested, a formula is used to estimate the number of individuals tested (source: Canada.ca).

\* The bracketed number represents the change in average daily tests (positive or negative) over the previous day's figure. These national numbers do not capture laboratory testing numbers for Alberta, due to reporting errors.

\*\* For internal use only – not for further distribution \*\*

**Table 2. Total and Reported Cases by P/T for the Last Seven Days**

	October 9, 2020			October 10, 2020			October 11, 2020			October 12, 2020			October 13, 2020			October 14, 2020			October 15, 2020		
	Total Cases	Total new cases	Tests done today	Total Cases	Total new cases	Tests done today	Total Cases	Total new cases	Tests done today	Total Cases	Total new cases	Tests done today	Total Cases	Total new cases	Tests done today	Total Cases	Total new cases	Tests done today	Total Cases	Total new cases	Tests done today
<b>BC</b>	10,185	119	7,505	10,355	170	7,798	10,514	159	N/A	10,633	119	N/A	10,734	101	N/A	10,892	158	24,922	11,034	142	4,800
<b>AB</b>	19,995	277	N/A	20,231	236	N/A	20,490	259	N/A	20,736	246	N/A	20,956	220	N/A	21,199	243	N/A	21,443	244	N/A
<b>SK</b>	2,034	22	1,724	2,068	34	1,285	2,092	24	2,207	2,140	48	1,686	2,174	34	1,553	2,199	25	1,174	2,232	33	1,626
<b>MB</b>	2,428	84	2,983	2,524	96	N/A	2,578	54	N/A	2,655	77	N/A	2,779	124	9,489	2,925	146	2,263	3,098	173	2,206
<b>ON</b>	57,681	939	43,445	58,490	809	42,849	59,139	649	42,695	59,946	807	N/A	60,692	746	65,492	61,413	721	31,153	62,196	783	38,654
<b>QC</b>	84,094	1,102	15,025	85,191	1,097	15,896	86,133	942	13,705	86,976	843	10,791	87,791	815	N/A	88,994	1,203	22,045	89,963	969	N/A
<b>NL</b>	279	2	403	282	3	225	282	0	206	283	1	227	283	0	272	283	0	302	284	1	387
<b>NB</b>	238	13	767	258	20	604	272	14	701	278	6	683	284	6	660	292	8	647	292	0	946
<b>NS</b>	1,089	0	722	1,092	3	435	1,092	0	N/A	1,092	0	768	1,092	0	440	1,092	0	523	1,092	0	645
<b>PE</b>	61	0	417	61	0	336	63	2	248	63	0	251	63	0	120	65	2	298	65	0	606
<b>YK</b>	15	0	27	15	0	N/A	15	0	N/A	15	0	N/A	15	0	58	15	0	32	15	0	25
<b>NT</b>	5	0	41	5	0	N/A	5	0	N/A	5	0	N/A	5	0	N/A	5	0	N/A	5	0	164
<b>NU</b>	0	0	58	0	0	9	0	0	13	0	0	N/A	0	0	N/A	0	0	34	0	0	16
<b>RC*</b>	13	0	0	13	0	0	13	0	0	13	0	0	13	0	0	13	0	0	13	0	0
<b>Total</b>	<b>178,117</b>	<b>2,558</b>	<b>73,117</b>	<b>180,585</b>	<b>2,468</b>	<b>69,437</b>	<b>182,688</b>	<b>2,103</b>	<b>59,775</b>	<b>184,835</b>	<b>2,147</b>	<b>14,406</b>	<b>186,881</b>	<b>2,046</b>	<b>78,084</b>	<b>189,387</b>	<b>2,506</b>	<b>83,393</b>	<b>191,732</b>	<b>2,345</b>	<b>50,075</b>

\*RC – Repatriated Canadians

\*\*This figure reflects people tested in Alberta since September 29<sup>th</sup>, 2020.

\*\* For internal use only – not for further distribution \*\*

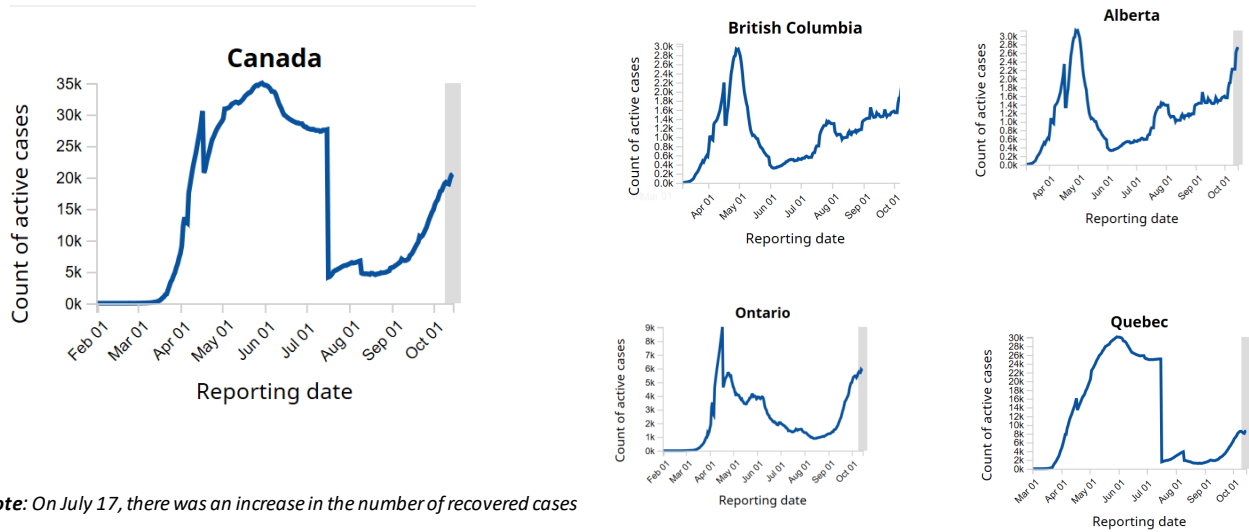
**Table 3.** Total and Active Cases in Canada over a Fourteen Day Period (when available)

	Sept. 27*	Sept. 28	Sept. 29	Sept. 30	Oct. 1	Oct. 4*	Oct. 5	Oct. 6	Oct. 7	Oct. 8	Oct. 12**	Oct. 13**	Oct. 14	Oct. 15
<b>ACTIVE CASES</b>	12,759 (+1,621)	13,416 (+657)	13,933 (+517)	14,490 (+557)	14,866 (+376)	16,432 (+1,566)	17,122 (+690)	17,799 (+677)	17,916 (+117)	18,494 (+578)	18,954 (+460)	19,741 (+787)	20,372 (+631)	20,543 (+171)
<b>TOTAL CASES</b>	153,125 (+4,031)	155,301 (+2,176)	156,961 (+1,660)	158,758 (+1,797)	160,535 (+1,777)	166,156 (+5,621)	168,960 (+2,804)	171,323 (+2,363)	173,123 (+1,800)	175,559 (+2,436)	182,839 (+7,280)	186,881 (+4,042)	189,387 (+2,506)	191,732 (+2,345)

\*Includes certain P/T Total and Active Cases Reported on Saturday and Sunday.

\*\*Includes certain P/T Total and Active Cases Reported over the long weekend.

**Figure 1.** Active Cases in Canada and Select Provinces

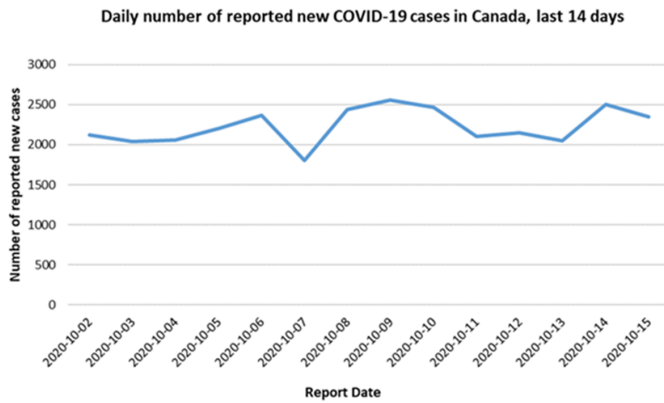


**Note:** On July 17, there was an increase in the number of recovered cases

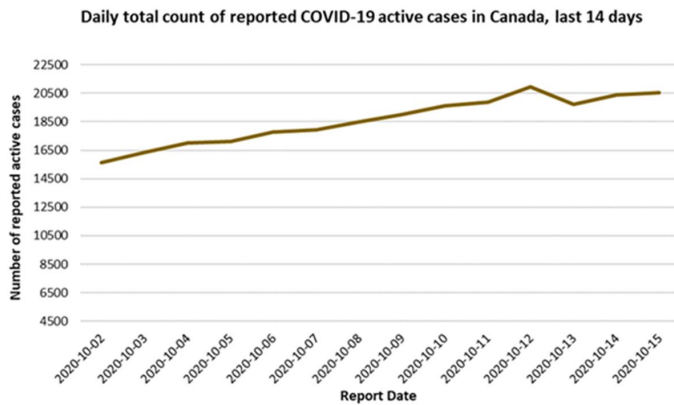
\*\* For internal use only – not for further distribution \*\*

in Quebec due to a revision in how they define these cases.

**Figure 2.** Daily Number of Reported **New COVID-19 Cases** in Canada over the Last Fourteen Days as of **October 15, 2020**



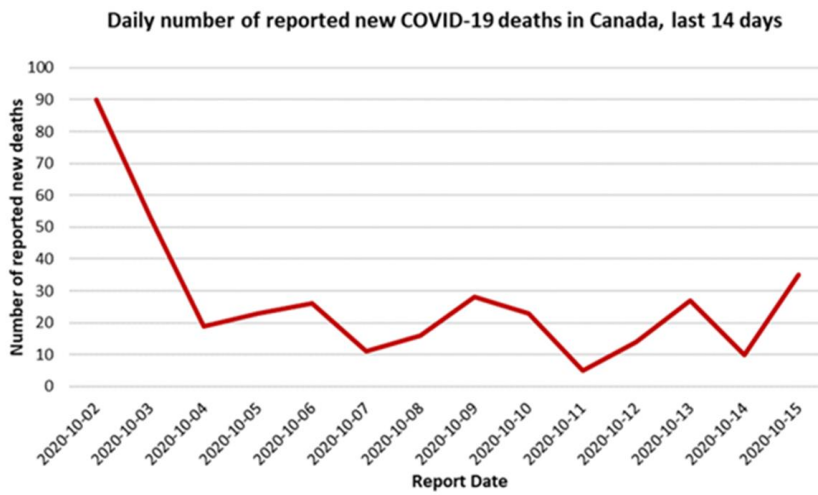
**Figure 3.** Daily Total Count of Reported **COVID-19 Active Cases** in Canada over the Last Fourteen Days as of **October 15, 2020**





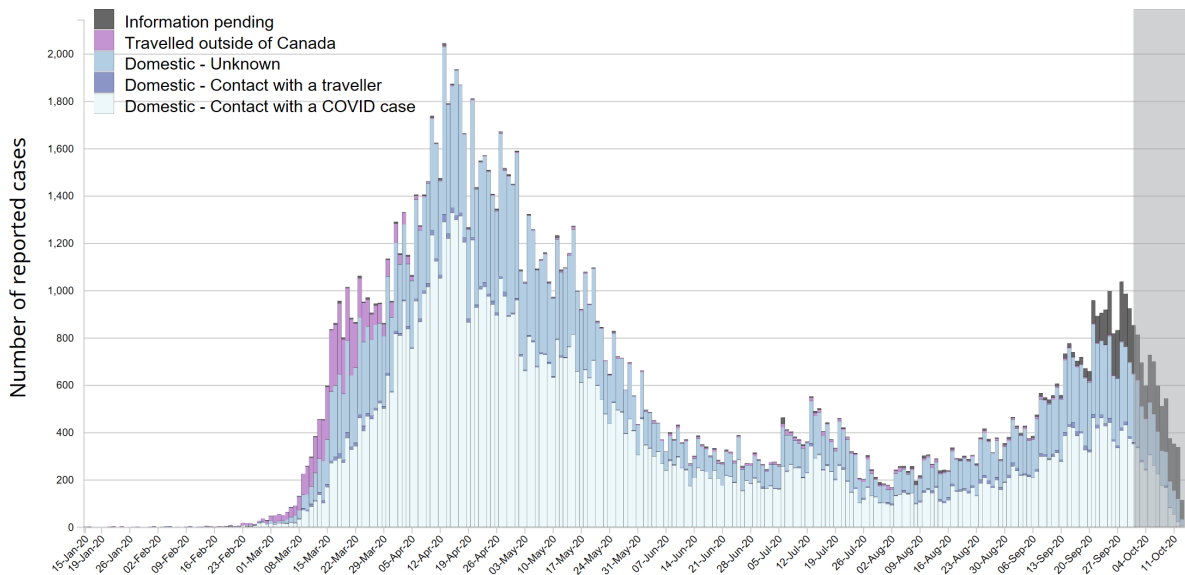
\*\* For internal use only – not for further distribution \*\*

**Figure 4. Daily Number of Reported New COVID-19 Deaths in Canada over the Last Fourteen Days as of October 15, 2020**



\*\* For internal use only – not for further distribution \*\*

Figure 5. COVID-19 Cases (n=151,924) in Canada, by date of illness onset and exposure category as of October 15, 2020



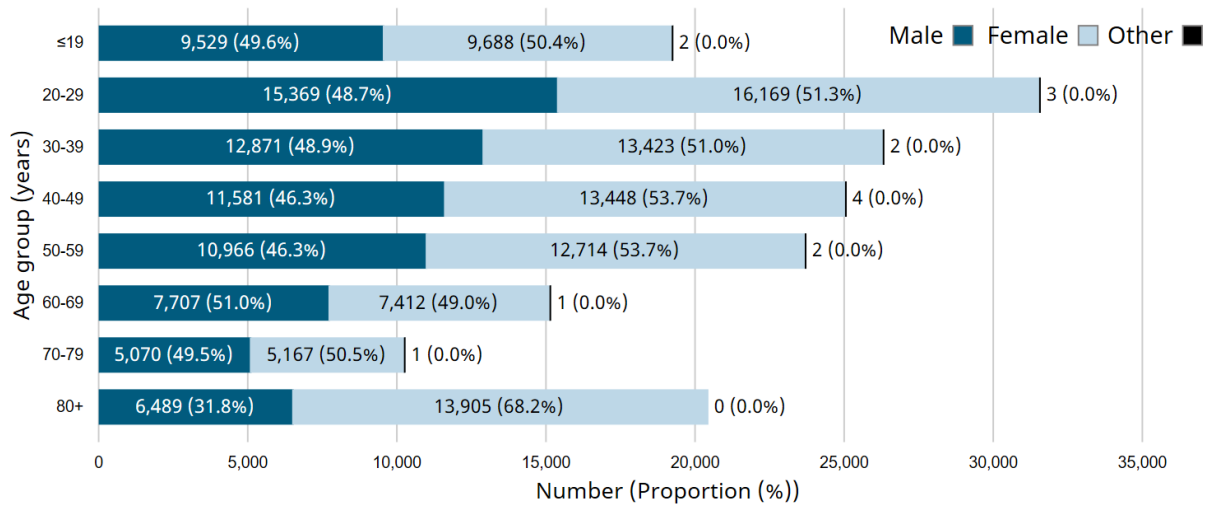
Note: The shaded area represents a period of time (lag time) where it is expected that cases have occurred but have not yet been reported nationally.

Source: <https://health-infobase.canada.ca/covid-19/epidemiological-summary-covid-19-cases.html?stat=num&measure=active#fn1>

\*\* For internal use only – not for further distribution \*\*

**Figure 6. Age by Sex Distribution of COVID-19 Cases (n=171,523) in Canada as of October 15, 2020**

Of the COVID-19 cases reported in Canada to date, approximately half (53.6%) are female. Approximately one-quarter (26.3%) of cases are 60 years old and over.



**Source:** <https://health-infobase.canada.ca/covid-19/epidemiological-summary-covid-19-cases.html?stat=num&measure=active#a5>

\*\* For internal use only – not for further distribution \*\*

**Table 4.** National and Provincial Effective Reproduction Number ( $R_t$ ) over a Seven Day Period (when available)

	Oct. 2	Oct. 5	Oct. 6	Oct. 7	Oct. 9	Oct. 13	Oct. 15	7-day Average
<b>Canada</b>	1.27	1.08	1.22	1.25	1.17	0.82	1.14	1.14
<b>BC</b>	1.03	0.48	1.36	1.28	1.11	0.00	1.90	1.02
<b>AB</b>	1.20	0.31	1.46	1.64	1.59	0.00	1.60	1.11
<b>SK</b>	1.35	0.72	0.70	1.00	1.14	1.99	1.53	1.20
<b>MB</b>	0.88	0.72	0.98	1.23	1.30	1.36	1.71	1.17
<b>ON</b>	1.28	1.06	1.05	0.99	1.14	1.11	1.11	1.11
<b>QC</b>	1.33	1.29	1.29	1.35	1.10	0.82	0.91	1.12
<b>NL</b>	1.00	1.00	1.00	1.00	1.00	1.00	1.00	1.00
<b>NB</b>	1.00	1.00	1.00	1.80	2.88	1.69	0.92	1.47
<b>NS</b>	1.00	1.00	1.00	1.00	1.00	1.00	1.00	1.00

Note:  $R_t$  is calculated over time and was estimated using reported case data.

**Figure 7.** Effective Reproductive Number Estimate for Canada

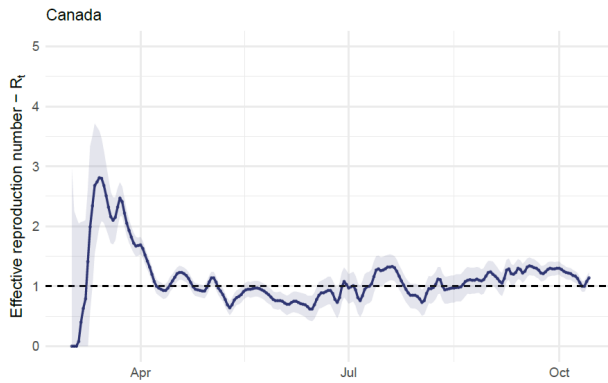


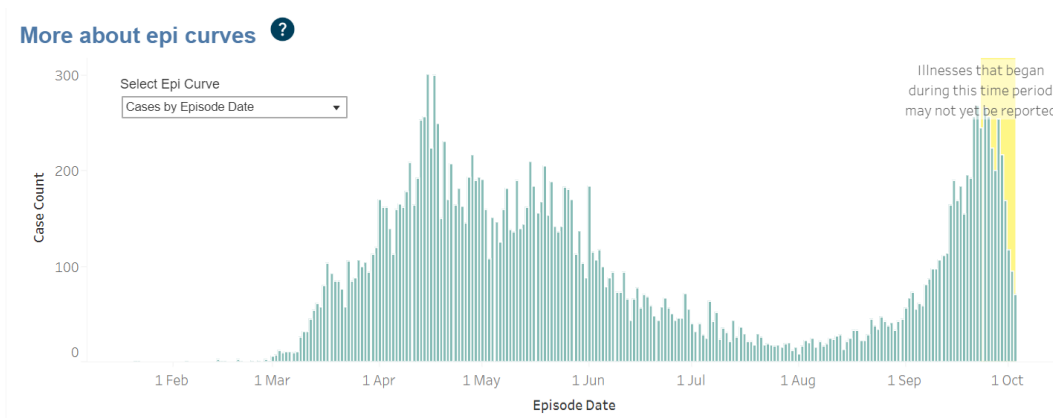
Figure 2: Effective reproductive number estimate for Canada

\*\* For internal use only – not for further distribution \*\*

**Table 5.** COVID-19 Cases in the Greater Toronto Area (Toronto, Durham, Peel, and York) for the Last Seven Days

	OCT. 8	OCT. 9	OCT. 10	OCT. 11	OCT. 12	OCT. 13	OCT. 14
NEW CASES	586	582	413	526	505	541	542
TOTAL CASES	37,516	38,098	38,511	39,037	39,542	40,083	40,625

**Figure 8.** Status of COVID-19 Cases in Toronto



Source: <https://public.tableau.com/profile/tpheu#!/vizhome/EpidemiologicalSummaryofCOVID-19Cases/EpiSummary>

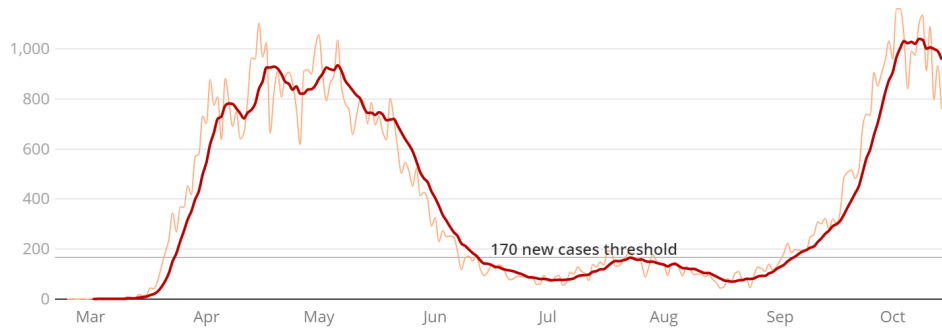
\*\* For internal use only – not for further distribution \*\*

**Table 6.** COVID-19 Cases in the Greater Montreal Area (Montreal, Laval and Montérégie) for the Last Seven Days

	OCT. 7	OCT. 8	OCT. 9	OCT. 10	OCT. 11	OCT. 12	OCT. 13	OCT. 14
	546	614	532	474	446	425	618	504
<b>TOTAL CASES</b>	56,331	56,945	57,477	57,951	58,397	58,822	59,440	59,944

**Figure 9.** Status of COVID-19 Cases in Greater Montreal Area

Daily new confirmed COVID-19 cases and seven-day moving average for Quebec. Health officials want to avoid passing 20 daily new cases per million people — 170 new cases per day for Quebec.



Source: <https://www.cbc.ca/news/canada/montreal/covid-19-oct-15-1.5763002>